

nuna®



mixx™ & demi™ grow
cup holder

Designed
around your life

nuna®

**IMPORTANT!
KEEP THESE
INSTRUCTIONS
FOR FUTURE
REFERENCE:
*READ CAREFULLY***

Contents

Product Information

Warranty

4

Contact

4

Warnings

5

Cleaning

5

Product Use

6

Product Information

Warranty

We have purposely designed our high-quality products so that they can grow with both your child and your family. Because we stand by our product, our gear is covered by a custom warranty per product, starting from the day it was purchased. Please have the proof of purchase, model number and manufactured in date available when you contact us.

For warranty information please visit:
www.nunababy.com/warranty

Contact

For replacement parts, service, or additional warranty questions, please contact our customer service department.

In the USA:

infoUSA@nunababy.com
www.nunababy.com
1.855.NUNA.USA (1.855.686.2872)

WARNING

Failure to follow these warnings, instructions and labels on the product could result in serious injury or death.

A child's safety is your responsibility. **NEVER** leave your child unattended.

Only use the cup holder with Nuna MIXX series and DEMI grow strollers.

To prevent a hazardous, unstable condition, **DO NOT** place more than 1 lb (0.5 kg) in the cup holder.

To prevent spills, **NEVER** use the cup holder for carrying a lidless container.

ALWAYS wash the cup holder before/after each use (see Cleaning).

DO NOT use the cup holder for hot beverages.

Cleaning

The cup holder is dishwasher safe on the top rack. Or wash with lukewarm water and a mild dish soap. Rinse, then drip or towel dry.

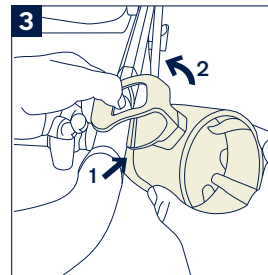
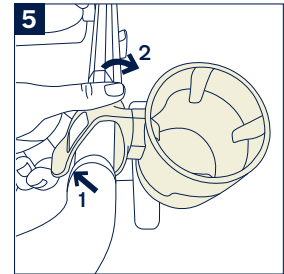
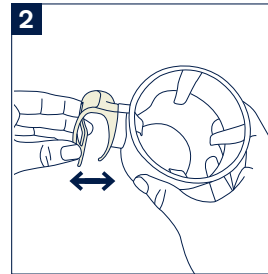
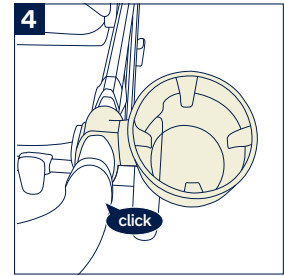
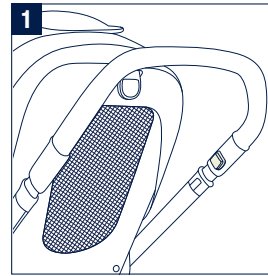
Product Use

For stroller assembly and usage, please refer to the stroller instruction manual.

Before attaching the cup holder, ensure the parking brake is engaged on the stroller.

- 1 - Locate the handle adjustment button on the occupant's right side of the stroller frame.
- 2 - To attach the cup holder, stretch the cup holder attachment hooks apart.
- 3 - For easier assembly, first place the right side of the cup holder attachment around the stroller frame (1). Then rotate the left side of the cup holder attachment over the handle adjustment button (2).
- 4 - Push the cup holder attachment down over the handle adjustment button and listen for a "click".
- 5 - To remove the cup holder, lift the end of the cup holder attachment (1) and rotate the cup holder away from the stroller frame (2).

⚠ Remove the cup holder before folding.



Nuna Baby Essentials, Inc. Nuna and all associated logos are trademarks.